



Linlee & Lance Nelson  
3900 Brooks St  
Missoula, MT 59804  
406-549-1100



excellence101

## Mountain Modern Pool Tables

Olhausen Billiards manufactures its tables in Portland, TN, in the United States, with each table made to order. Additionally, customers can purchase matching shuffleboard tables (12'-22'), air hockey, foosball, and table tennis tables, as well as dartboard cabinets, all framed in similar wood. **Prices quoted in this document include delivery, professional installation, choice of Simonis 860 cloth color (normally +\$350), and a premium accessory kit**



(normally \$475). If the table comes with a drawer, it is included in the price. If a wall rack is preferred, the price will be adjusted.

Olhausen is a custom manufacturer capable of fulfilling specific design requests. **All prices include white-glove delivery and professional installation.**

The Breckenridge by Olhausen is priced at \$8,350 with the drawer and \$7,475 without the drawer (this pricing includes Simonis cloth & our Premium

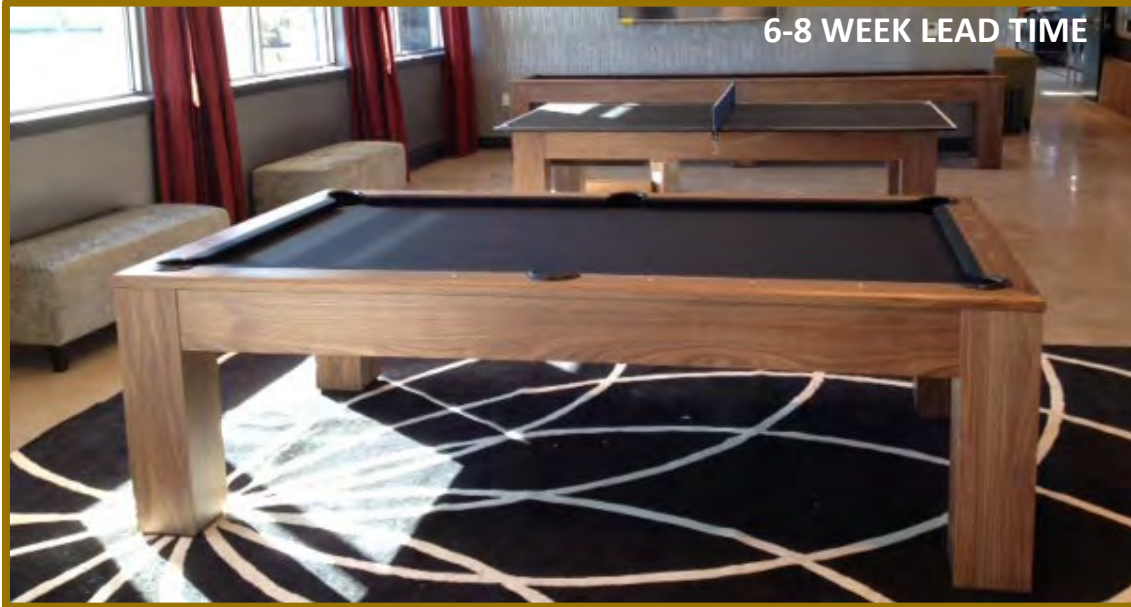


Accessory Kit). This model borders on "just plain rustic," but it has been included here due to its popular features such as buffalo nickel sights and dovetail corners. **Add \$1,000 for a Breckenridge made in Oak: IN STOCK please request images).**

**Olhausen now offers the addition of a gun safe drawer (call for pricing).**

The Breckenridge comes standard in either the dark brown "Breckenridge" finish, with band saw distressing (above), or in the lighter Timber Ridge finish (shown left) **Add \$500 for the Timber Ridge finish.** Buffalo nickel sites are the perennial favorite choice on this table.

**The Madison by Olhausen** is a table with sleek lines that can be finished with distressed touches to maintain a rustic look. We order 6.5" pockets in this model because it allows you to finish your game without moving balls from pocket to pocket in the shallower 5.5" pocketed tables. Prices range from \$8,865 (including drawer & all upgrades) for a standard Maple and standard Olhausen finish to approximately \$10,950 for custom selected woods and high-end laminates and finishes.



This Madison can be done in Maple with Walnut rails or the whole table in solid cherry (as shown); use matte distressing (+660) to add a rustic touch. As shown (without the drawer) it is \$9,775 (all upgrades included); pricing is dependent on availability of specialty woods)

The Madison below is made in the Gunmetal Reconstituted Veneer and will fit in any rustic game-room. The reconstituted veneer finish samples are available from Olhausen upon request. This table is \$9,995 with a drawer and all the upgrades.



The Recon Veneers must be done on a perfectly square rail system, so the Breckenridge rail system is substituted for the rounded Madison rail system, and this is ordered as a Madison "Special Order" with a 6–8-week lead time.

Olhausen makes a matching shuffleboard table in 12' and 16' sizes.



This Madison is done in Oak with a custom Grey (Customer Match) finish for \$9,795 (upgrades included). It could easily be distressed with a matte finish for \$200. CalHouse or Drafeev will match any of the Olhausen finishes in their game table and furniture line.



This Madison is made with brushed aluminum legs and Zebrawood rails and aprons fits a more modern aesthetic, but I thought I would include it to show the ability to mix and match leg and rail finishes. The modern legs can be paired with a more rustic wood choice on the rails.



4-6 WEEK LEAD TIME

The **Tustin by Olhausen** is made standard in Oak and available in a Matte Heritage Oak finish, or, for Rustic-Modern game rooms, this table can be made in the dark brown Breckenridge finish; add Matte Distressed finish for \$300.

The **Tustin in Oak** in an 8' size is **\$8,995** (w drawer, Simonis & upgraded accessory package):

The Tustin Pool Table in Matte Graphite is shown Left. **With a drawer and the premium finish, this table is \$9,395.**

The **Olhausen Encore** (below) is typically crafted with a Maple veneer, but it can also be ordered in Reconstituted Veneers, which offer several rustic options. Please note that certain Recon Veneers will require an upgrade. As shown below in Gunmetal, it is **\$10,995**. The quoted price includes premium cloth and accessories.



Available in 12', 14', 18', and 20' lengths; prices include delivery & installation.

Tustin Shuffleboard	
12'	\$10,295
14'	\$10,495
16'	Not Avail
18'	\$12,295
22'	13,795

Make this 8' Encore table "Mountain Modern" by choosing a Rustic Veneer (shown in Recon Qtr Sawn Teak). Olhausen offers many choices in Rustic Veneers; we send samples!



4-6 WEEK LEAD TIME

**Back to the more rustic side of things!**

The **8' Olhausen Timber Ridge** can be made in the darker Breckenridge finish or the lighter Timber Ridge finish (shown below) which brings the Timber Frame look to your game room (with all upgrades) for **\$8,995**. This table is not available with a drawer, so we recommend the Breckenridge Wall Rack made in a Timber Ridge finish **\$995**.



**4-6 WEEK LEAD TIME**

Matching shuffleboards can be crafted for all Olhausen tables. A 2025-26 pricing grid for the Timber Ridge is found below.



**6-8 WEEK LEAD TIME**

**2025-26 Pricing:**

12'	\$10,295
14'	\$10,495
16'	\$11,495
18'	Not Avail
20'	Not Avail
22'	\$13,595

These prices *include* delivery, professional installation & accessories.



The **Olhausen Youngstown**, made standard in Oak, can be created in any of the beautiful Olhausen finishes. It is priced here with a drawer (and all upgrades) and shown in the premium Matte Black Lacquer finish (on Maple) at **\$10,195**:

The corner castings and stretchers are made in an industrial style black iron on the Youngstown Oak finish (Right). In the Youngstown finish the Pool Table with the drawer is **\$9,795 (with all premium upgrades)**, and the foosball table is **\$4,495**.



**The Olhausen Youngstown in Heritage Oak:** We installed this pool table at the Springs in Bozeman. This table looks as though it is glowing with its Heritage Oak finish on Oak. This table is **\$9,395 w/out the drawer \$10,175 with it**.

The Youngstown is available in either maple or oak hardwood at no additional cost. Should you prefer walnut or another custom option, we will provide a separate quotation for that selection.

**6-8 Week Lead Time**



**The Olhausen Youngstown** can be done in a matching shuffleboard table and the pricing is found below:

**2024-2025 Pricing:**

9'	\$9,795
12'	\$9,995
14'	\$10,280
16'	\$11,270
18'	Not Avail
20'	Not Avail
22'	\$13,320

**The Olhausen Durango (below)** is another table, like the Breckenridge, that is done either in furniture grade pine with a band-saw treatment (in the Dark Brown finish) and the lighter pine finish called the Timber Ridge finish (seen on pages 1 & 5). This table is available in either finish, and we recommend the Buffalo Nickel sites. Featuring the highest quality worsted wool cloth, a Premium Accessory Kit, and a cabinet-grade storage drawer, this table is delivered and installed at **\$9,150**.



Available in 12', 14', and 16' sizes



The **Olhausen Pinehaven** has sleek enough lines to fit into the modern category; I've included it here for those who are interested in the log look. Its live-edge rails are a beautiful feature on this unique table.

The **Olhausen Pinehaven 8' with drawer is \$7,695** (includes Simonis cloth & the Premium Accessory Kit). I recently ordered this table done in Fossil Grey and it is spectacular! It sold, but I would order it again!



Matching Shuffleboard Price Grid for 2024-2025:

9'	\$8,370
12'	\$8,520
14'	\$8,750
16'	\$9,740
18'	\$10,340
20'	\$11,660
22'	\$11,790

All shuffleboards come with wax (the grainy stuff in the cans), weights (or pucks), and a table cleaning sweep. The only extra items to be concerned with would be bowling pins, lighting, scoring mechanisms and covers.

The **Olhausen 8' West End** is on the more Modern side of Mountain Modern at **\$7,600** with a drawer and all upgrades (**\$6,995** with standard Championship cloth and Basic Accessory Kit): It is done here in Espresso on Maple. This table is available on the **3-week delivery schedule** from Olhausen. The West End shuffleboards are approximately \$200 less than the Pinehaven above (Call for Pricing).



The **8' Brunswick Sanibel in Rustic Dark Brown or in Rustic Grey** also fits the Mountain Modern aesthetic. It is set-up and delivered **with the Centennial Accessory Kit and Centennial cloth for \$7,795**. The 7' table is available with the same Premium package for \$7,495.



Shown above in the Rustic Grey, the Sanibel is also available in the Rustic Dark Brown. The Cue rack that is available is the **Sanibel Cue rack in either finish for \$1,250** (shown on page 10) when it is purchased with the table, \$1,375 ordered later. There is a matching shuffleboard available.



The consumer should be aware that this table has shallow pockets, necessitating the relocation of balls to another pocket after four or five balls have been pocketed.

The Sites are done in a hammered metal and a custom cover is available.



Please see our PDF on Conversion Top options for Table Tennis Conversion. We also have Cocktail Cabinets with 60-in-1 Pac-Man/Donkey Kong games for \$2,495



Shown here in Rustic Dark Brown, the Sanibel is also available with a **matching pool table dining top for \$1,650.**

The Rustic Dark Brown has a band-saw detail that brings this modern design into the rustic home. We highly recommend Simonis cloth (+\$300) though Brunswick Centennial cloth is its equivalent and is available with a Teflon water resistant finish for \$350.



The modern styling continues with this beautiful Sanibel Cue rack. The bridge stick is stored upside down in this configuration. If you would like more storage for balls & accessories, the **Centennial Bench is available for \$1,650** in a matching finish.



Brunswick Billiards brought back the Restoration Hardware Parsons pool table due to customer requests. This beautiful White Oak table is an eclectic blend of rustic and modern and fits into any environment with its beautiful wood. **\$9,595 includes delivery & Installation, the Heritage Play Pack and Centennial Cloth in your color choice.**



Available To Ship	
12' Shuffleboard	\$8,495
14' Shuffleboard	\$8,695



Our prices include delivery & white glove installation.

Finally, the Brunswick 8' Edinburgh joins the Mountain Modern aesthetic in its metal leg option. Shown below, the 8' Edinburgh is \$9,995 with the metal legs, Centennial Cloth & the Centennial Accessory Kit. Brunswick no

In Stock: Now Avail in  
the **Iron Leg** Only



longer makes this table and that is a shame. This is a beautiful, one-of-a-kind table and fits the mountain modern aesthetic perfectly. ***We have one remaining.***

The Edinburgh has another leg choice that pushes it toward the rustic game-room design, but it can also

be an excellent choice depending on your room. The price is the same. (This model is no longer available).

The Cue Rack choice can be either the **Heritage Floor Cue Rack** (shown left) in Rustic Dark Brown \$495, \$550 PWT which is a great storage option even with a wall rack, or the **Edinburgh Wall Cue Rack** (\$1,250 if purchased with the table or \$1,475 ordered separately). to match this beautiful table.



**Sold Out**

These are some of the new tables available from Brunswick:

**The Brunswick Hickory 8':**



**In Stock**



The Brunswick Hickory is available in an 8' size and is available for immediate shipment as of this writing Jan 2025: **\$5,495 for the 8' model with Brunswick Centennial Cloth & the Heritage Accessory Kit**. There is a matching Floor rack available for \$495 when purchased with the table (\$550 separately).

This table is done in a solid hardwood with a Hickory veneer, hand-hammered metal sites & Brunswick cushion rubber. Why is this less expensive? This pool table does not have Brunswick's Super Speed cushion/rail design.



**The 8' Brunswick Dameron: \$8,495 with Centennial Cloth & Heritage Accessory Kit**



This table is made with solid hardwood with a White Oak veneer, hand-hammered metal sites, Brunswick's best Super-Speed cushion rubber and solid steel legs and corner castings. A matching wall rack is available.



**The 8' Brunswick Canton has been one of Brunswick's most successful models in its history.** With solid steel turnbuckle stretchers and corner castings in Dark Forest finish, this popular table is in stock and available for delivery. The Canton comes with the Heritage Accessory Kit and Centennial Cloth for **\$7,545**. This table is also available in Rustic Grey (shown below). Matching Wall rack available for \$1,250 at the time of purchase (\$1,475 separately).



Dark Forest is a rustic finish that will hold up to many years of family use while still looking great.

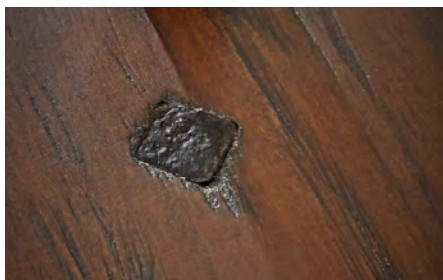
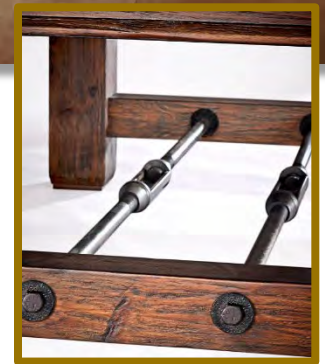


The steel corner castings have a steel insert adding a nice custom look to an already beautiful table. The Rustic Grey is shown below.

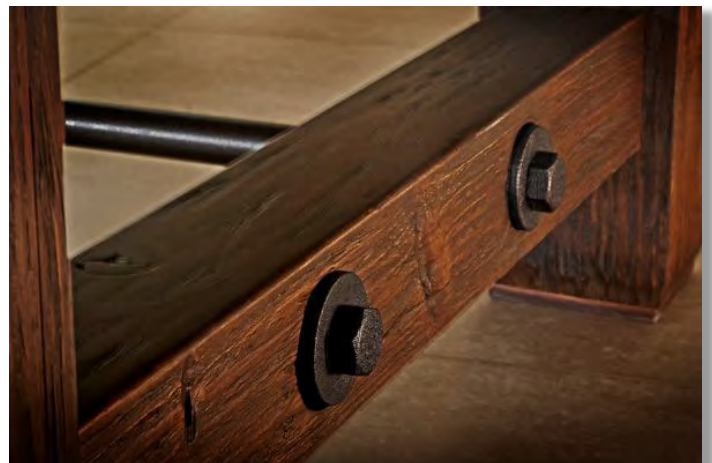
**IN STOCK IN BLACK FOREST**



The steel turnbuckles terminate in large bolts that give the table its industrial look.



Hand-hammered steel sites complement the rustic finish.



**The Brunswick 8' Soho \$6,995**, in Lance's opinion, is a better-built table than the Sanibel. It has similar lines, but the leg design provides the installer with the ability to tighten the legs in better alignment than with the Sanibel's design. It will not affect the consumer, but when you know that something is built better, it's difficult not to

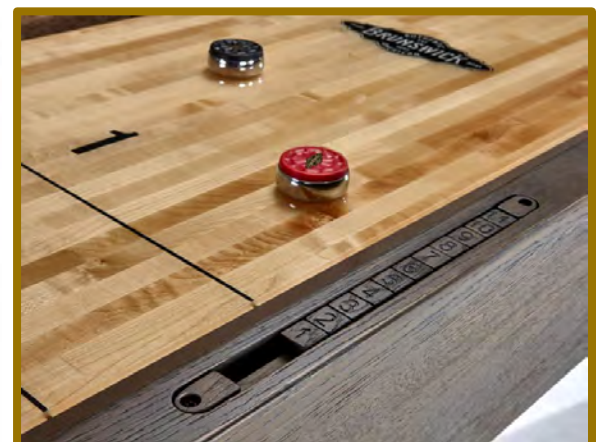
The Soho comes standard with the Heritage Play Pack & Championship 4066 Cloth. Add Centennial Cloth for \$350, the BSBS Premium Accessory Kit for \$95, or upgrade to the Centennial Play Pack for \$340 (recommended)



mention it. The Loft is also made in the Nutmeg finish which has rustic characteristics, but with a modern feel. We like this table although it is not available in the 7' size. It does have a 12' companion shuffleboard table for \$7,795, however, and we've shown it in the cut-out below.



One of the best features in the Brunswick shuffleboard line is the built-in scoring. Add lighting for \$895 when purchased with the table, and some bowling pins (\$179) and you have many years of great entertainment!



**The Brunswick Birmingham**, available in both 8 and 9-foot models, features a Charcoal finish that exemplifies rustic elegance. Combining rugged charm with an industrial, loft-style look makes the Birmingham a perfect choice for modern game rooms in need of a vintage touch. Featuring a distressed, rough-hewn finish with a cast iron decorative pedestal and turnbuckle stretcher element, the Birmingham is stylish and rustic down to the last detail.

**The 8' Birmingham** comes with Centennial Cloth & a Centennial Play Kit for **\$15,995**; add **\$1,855** for the 9' model. The Wall Rack is \$1,300 at the time of purchase (\$1,475 if ordered separately).



**AVAILABLE TO SHIP FROM BRUNSWICK**



## Plank & Hide Pool Tables

Plank & Hide pool tables are manufactured in China, and they differ in quality from Brunswick and Olhausen models. These tables offer an affordable option for families who may not prioritize high-end gaming tables and use them mainly for occasional family gatherings, rental properties, or decorative purposes.

### The 8' Morse

This table is probably the most rustic of the Plank and Hide models. The benefit to this model is that we have it in stock and can deliver it quickly.



**The Morse is \$5,995** and comes standard with Championship 4066 Cloth (wool/nylon blend) and a Standard Play Pack. Upgrades include either Simonis Cloth (860 worsted wool) \$350 or Simonis HR for \$375 or Centennial Cloth for \$350. A Premium Play Pack which you can view at the links in this PDF is a \$450 upgrade.

**The Morse** is made of Solid Ash and is finished with a distressed Barnwood Ash finish. The sites are a hammered metal as are the corner castings. Leather interior pockets and dovetail construction are one of the reasons that we have agreed to stock this table.



**California House** pool tables can be ordered in rustic finishes to complement a mountain modern aesthetic, though they are generally quite contemporary in style. They also tend to be approximately 20% more expensive than those offered by Brunswick or Olhausen Billiards. These exquisite tables are meticulously handcrafted in the U.S.A. and are renowned in the industry for their exceptional engineering and use of high-quality materials.



The Atherton (above) in an 8' model with a standard finish is \$12,495 (w Simonis cloth and Premium Accessory Kit). The 8' Austin (shown below) is \$11,560 in a standard finish (w Simonis cloth and a Premium Accessory Kit).



Distressed and glazed finishes are available from California House, and it is also known for its high-quality poker tables and spectator chairs. One notable product is the California House Spectator Chair, widely regarded as the most comfortable chair in the game room furniture market. The Austin table, depicted above, is an exquisite piece that can easily be finished with distressed and glazed techniques. It is shown in Auburn with Khaki cloth.

Chairs in leather are \$2,500/each

The newest addition to the California House Line is a great fit for a modern mountain home. The 8' Wind and Sea is one of California House's newest models. It can be done in any of the beautiful finishes, glazed or distressed, to your specifications. Approximately \$14,500 (awaiting pricing)



Add a game table from the Cal House line to finish up an unforgettable entertainment space: The Palisades below shown in Distressed and Glazed Honey for \$5,995 delivered.



Game tables come in your choice of 42" to 66" Round or Octagon with a reversible dining top (shown). Professional tops with padded armrests and routed chip holders are available on the 60" round models and the 72" and 96" ovals.